



Connecting pipelines of prosperity Safer and sustainable

ESG Report
2022-23 & 2023-24


Pipeline Infrastructure Limited

Contents

01-05

Introduction

- 01 From the Managing Director's Desk
- 02 PIL Overview

06-13

Environment

- 07 Conserving Energy
- 08 Green House Gas (GHG) Emissions
- 09 Climate & Water Management



Social



14-23

Social

- 15 Human Capital
- 16 Diversity & Inclusion
- 17 Shared prosperity

24-29

Governance

- 25 Corporate Governance
- 26 Ethics and Integrity
- 27 Risk and Resilience



From the Managing Director's Desk

Fueling India's Clean Energy Transition

Dear Stakeholders,

I am pleased to present the ESG report, which outlines the initiatives undertaken by Pipeline Infrastructure Limited (PIL) during FY 2022-23 and FY 2023-24. We have now successfully completed five years of sustainable growth, demonstrating our steadfast commitment to an inclusive future. As we move forward, we eagerly anticipate the promising developments that lie ahead in our journey.

We are committed to advancing India's integrated energy infrastructure by enhancing connectivity and utilising cutting-edge technological advancements. As a premier natural gas pipeline operator in the nation, we aim to create enduring value for our stakeholders through safe, reliable, and sustainable practices. By transporting clean energy, we connect individuals, industries, and communities, thereby contributing to a sustainable future.

“ We are committed to advancing India's integrated energy infrastructure by enhancing connectivity and utilising cutting-edge technological advancements.

As a natural gas pipeline company, environmental stewardship is a core principle of our operations. We manage our environmental impact and meet energy demands by embedding sustainable practices and reducing our carbon footprint. We invest in advanced technologies to promote a greener planet for future generations. Safety is our top priority, ensuring our delivery of clean energy benefits millions. Our community outreach efforts through various Corporate Social Responsibility (CSR) initiatives in the remote regions where we operate demonstrate our dedication to community development.

At PIL, we focus on developing our human capital through targeted talent development practices to achieve strategic impact, operational efficiency,

and productivity. We invest in our people by providing multi-tasking training for field engineers and technicians, equipping them with skills for diverse operational environments. We prioritise inclusion and diversity to broaden workforce participation and cultivate varied perspectives. We support actions that promote workplace equity, ensuring everyone can thrive.

Connecting pipelines of prosperity, we forge pathways to a safer & sustainable progress, enriching lives and imbuing resilience across the nation.

Warm regards,

Akhil Mehrotra
Managing Director



PIL Overview

Leading India's Energy Landscape with Clean Infrastructure

Pipeline Infrastructure Limited (PIL), is pioneering India's energy future as the nation's first bi-directional pipeline operator. PIL is proud to play a pivotal role in delivering clean energy with safety, sustainability, and dependability at the forefront.

PIL's expansive 48-inch diameter pipeline traverses from the east coast to the west, extending from Kakinada in Andhra Pradesh to Bharuch in Gujarat. This robust infrastructure, forming a vast and strategic

network of 1480 km, including spur and dedicated pipelines, is complemented by the above-ground facilities, featuring 10 compressor stations with a combined installed power capacity surpassing 900 MW.

Owned by Energy Infrastructure Trust and sponsored by globally renowned Brookfield Asset Management (BAM), a leader in alternative asset management, PIL is committed to facilitating the seamless transportation of energy across regions. Recognised as a Common Carrier Pipeline by the Government of India and approved by the Petroleum and Natural Gas Regulatory Board (PNGRB), we are a major force in India's energy infrastructure, driving innovation and sustainability in every endeavour.



Our Vision

To be the best Natural Gas pipeline operator, delivering value in a safe, reliable and sustainable manner



Our Mission

Carry out the transmission business complying with highest standard of safety and ethics & compliance.

Drive reliable, efficient and competitive pipeline operations.

Ensure best-in-class service to the customers and value enrichment to all stakeholders

To be the preferred employer in the industry

Continuous focus on risk reduction and maintaining consistency with internationally recognised oil and gas practice and framework.



Our Core Values

PIL values are the non-negotiable principles that guide the organisation. Our values are the purpose for our existence

PASSION

QUOTE-TEAM

EXCELLENCE

TRUST

RESPECT

INTTEGRITY

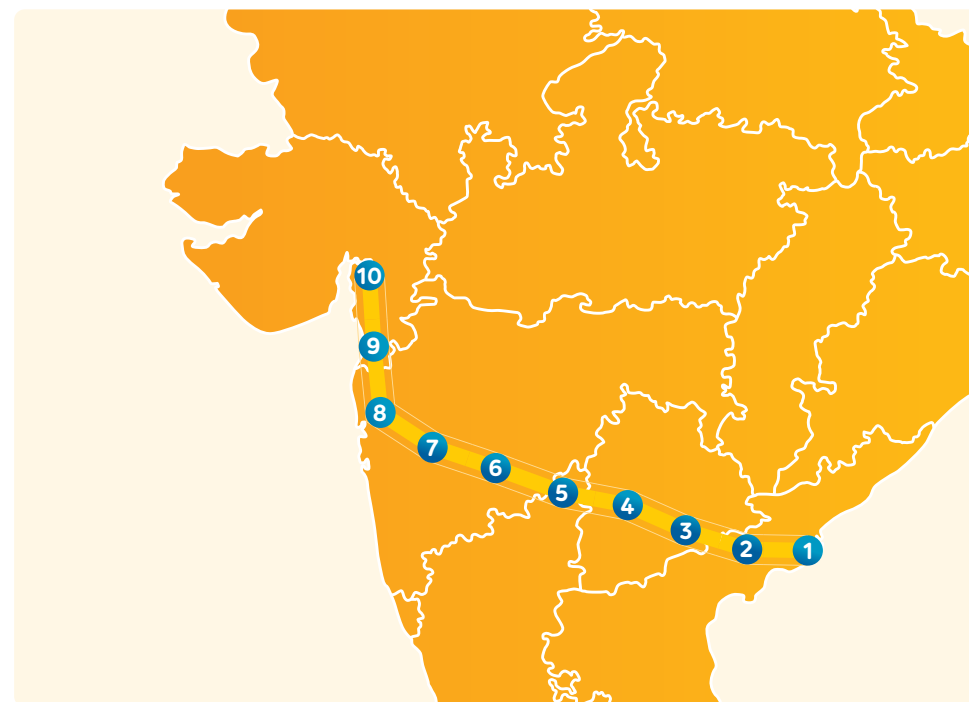
Our network is anchored by two cutting-edge Pipeline Operation Centres (POCs) equipped with advanced telecommunications, emission control, and operational systems. These POCs are instrumental in the safe monitoring and remote operation of our pipeline and associated aboveground facilities, including compressor stations, main line valves, and metering stations. Equipped with top-notch Supervisory Control and Data Acquisition (SCADA) systems, fire & gas detection, alarm management, custody transfer measurements, video surveillance, both POCs serve as primary and back-up operation centres.

Our infrastructure effortlessly interlinks with major networks such as Integrated Hazira Vijaipur Jagdishpur / Dahej Vijaipur Gas Pipeline in Gujarat, Dahej-Uran-Panvel Pipeline in Maharashtra, and the Krishna Godavari Basin network in Andhra Pradesh operated by GAIL (India) Limited (GAIL). We also connect to Gujarat State Petronet Limited (GSPL) pipelines in Gujarat and Andhra Pradesh, alongside serving a wide array of direct customers, including 16

City Gas Distribution (CGD) entities. Our reach extends to key domestic gas sources, including Reliance Industries Limited & BP Exploration (ALPHA) Limited KG-D6 block, Oil and Natural Gas Corporation east coast fields, and Shell Energy India's Hazira Liquefied Natural Gas (LNG) regasification terminal in Gujarat. Leveraging the inter-connected pipelines of GAIL and GSPL, we facilitate the seamless transportation of gas from Petronet LNG Limited's LNG regasification terminal at Dahej in Gujarat and GAIL's LNG regasification terminal at Dabhol in Maharashtra, continuously exploring new connections to upcoming LNG regasification terminals and cross-country pipelines.

PIL dedicatedly serves a varied cross-section of customers, including refineries, fertilisers, petrochemicals, power plants, and CGD operators, playing an integral part in India's national gas grid and unified tariff regime. Beyond transportation, we offer Imbalance Management Services such as parking and lending to assist customers in managing gas portfolios and demand-supply fluctuations.

Our Pipeline Network



Compressor Stations

CS1 - Kakinada

CS2 - Eluru

CS3 - Suryapet

CS4 - Pudur

CS5 - Humnabad

CS6 - Barshi

CS7 - Shirur

CS8 - Kalyan

CS9 - Valsad

CS10A & 10B - Bharuch

PIL Service Portfolio

PIL operates a common carrier pipeline authorised by PNGRB for Natural Gas transportation

Key points about PIL's service portfolio include:

1

Pipeline Infrastructure

PIL owns a 48" diameter trunk pipeline spanning 1,375 km with a 105 km spur line. The pipeline has 10 Compressor Stations and 2 operation centres, incorporating modern technology for safe and efficient operations.

2

Strategic Importance

PIL pipeline is a critical part of the National Gas Grid, connecting gas sources on the East Coast to consumption centres in the Western, Northern, and Southern regions of India. It enables bi-directional gas transportation.

3

Customer Base

PIL serves various customers, including City Gas Distribution (CGD), petrochemical companies, and industrial customers. These customers can be directly connected to PIL's pipeline or located along 3rd party pipelines of GAIL and GSPL.

4

Gas Sources

PIL pipeline is connected to domestic gas sources, including the Krishna Godavari Dhirubhai 6 (KG-D6) gas block operated by Reliance Industries Limited (RIL) and Oil and Natural Gas Corporation Limited (ONGC) gas fields on the East Coast. It also links to the Liquefied Natural Gas (LNG) terminal operated by SHELL Energy India in Gujarat. It transports gas from LNG terminals at Dahej and Dabhol through inter-connected pipelines of Gas Authority of India Ltd (GAIL). and Gas Gujarat State Petronet Limited (GSPL).

5

Interconnections

PIL pipeline is interconnected with significant pipeline networks like Hazira- Vijapur-Jagdishpur (HBJ)/Dahej-Vijapur-Vijapur-Dadri (DVPL in Gujarat, Dahej-Uran- Panvel-Dabhol (DUPL) in Maharashtra, and the KG Basin network in Andhra Pradesh (owned by GAIL). It is also connected to Gas Gujarat State Petronet Limited (GSPL) pipelines in Gujarat and GSPL India Transco Pipeline in Andhra Pradesh, allowing gas transportation from the East Coast.

6

Strategic Importance

Downstream entities from PIL include GAIL (India) Limited and GSPL, which are cross-country pipeline operators. Customers from sectors like fertiliser, City Gas Distribution (CGD), refinery, petrochemical, and other industrial segments are connected to PIL or 3rd party pipelines.



PIL's service portfolio encompasses the operation of a strategic pipeline infrastructure, connecting gas sources and consumers across different regions of India. It serves a diverse customer base and collaborates with other pipeline operators to ensure efficient gas transportation.

Memberships and Associations



Confederation of Indian Industry



Associated Chambers of Commerce & Industry of India



Federation of Indian Chambers of Commerce & Industry



Natural Gas Society



Confederation of Indian Industry

PIL values stakeholder relationships for business growth. We engage internal and external stakeholders through various channels to understand expectations and communicate performance and future plans. We identify and continuously engage stakeholder groups, aligning operations with their needs. Efficient communication channels incorporate feedback into our vision and strategy.



Shareholders/Investors

Engagement with shareholders/investors occurs annually and on event-based occasions to discuss matters requiring approval, Company updates, performance, governance, and growth plans through meetings, reports, announcements, and investor calls.



Regulator & Government

Regular engagement is maintained through email, telephone, face-to-face meetings, and virtual conferences to discuss Company representation on regulatory issues and compliance with regulations.



Suppliers

Supplier engagement occurs on a need basis for discussions on material/service requirements, quotations, workshops/training, contracts, and performance reviews. Communication happens through verbal discussions, meetings, emails, and phone calls.



Customers

Daily engagement with customers for operational contractual matters, Gas Transportation Agreement (GTA) negotiation / administration is driven through performance reviews, communication through email, telephone, meetings, conferences, and a web-based system.



Communities

Engagement with the community stakeholders occurs on a need basis, involving need assessment for Corporate Social Responsibility (CSR) initiatives and impact assessment through direct meetings, communication with villagers, Non Governmental Organisation's (NGO), and surveys.



Employees

Regular engagement with employees is driven through town halls, communication from Human Resources (HR), wellness sessions, workshops, feedback, recognition, and team building activities.



Environment

Driving Decarbonisation for a Cleaner Way Forward

We are dedicated to protecting the environment through mindful operations, focusing on energy conservation, GHG emissions, waste and water management, and responsible asset management.



Conserving Energy

For a Better Future

As a Natural Gas pipeline operating company, PIL recognises the importance of environmental stewardship. The company aims to manage its impact on the environment in a sustainable and responsible manner while meeting society's growing energy demands.

Conserving Energy

While renewable energy is ideal, reducing consumption and using efficient equipment are essential. Increased energy consumption has driven global warming.

At PIL, we aim to lower GHG emissions and conserve energy by optimising reliance on fossil fuels in our operations.

Energy Conservation

To achieve the goal of alleviating environmental degradation, some of the key activities include:

1) Installation of servo stabiliser

Installation of servo stabiliser at M&R sites 31 and 47 continues to help us reduce the use of standby emergency diesel sets during supply imbalances leading to reduced diesel consumption.

2) Replacement of conventional light sources with LED bulbs at all sites

LED light installation and use at PIL sites including Compressor station, MLV, and M&R sites commenced in 2019. We have a ambition to achieve conversion of more than 95% by installed quantity. This has helped in saving electricity at MLV and M&R sites where PIL is presently sourcing electricity from the grid.

3) Interconnection scheme between captive power plants

Compressor Stations 10-A and 10-B each have separate captive power plants. Implementing an interconnection scheme between these two stations has effectively managed low fuel consumption during standby mode,

resulting in a reduction of natural gas consumption by 110,000 SCM per month.

4) Installed Bureau of Energy Efficiency (BEE) rated air conditioners

Energy-efficient air conditioners with BEE ratings from 3 to 5 stars have been installed across all sites, enhancing energy efficiency and reducing overall power consumption.

Our Commitments



ENERGY EFFICIENCY - Implement Energy Efficiency Initiatives at all PIL facilities by 2030

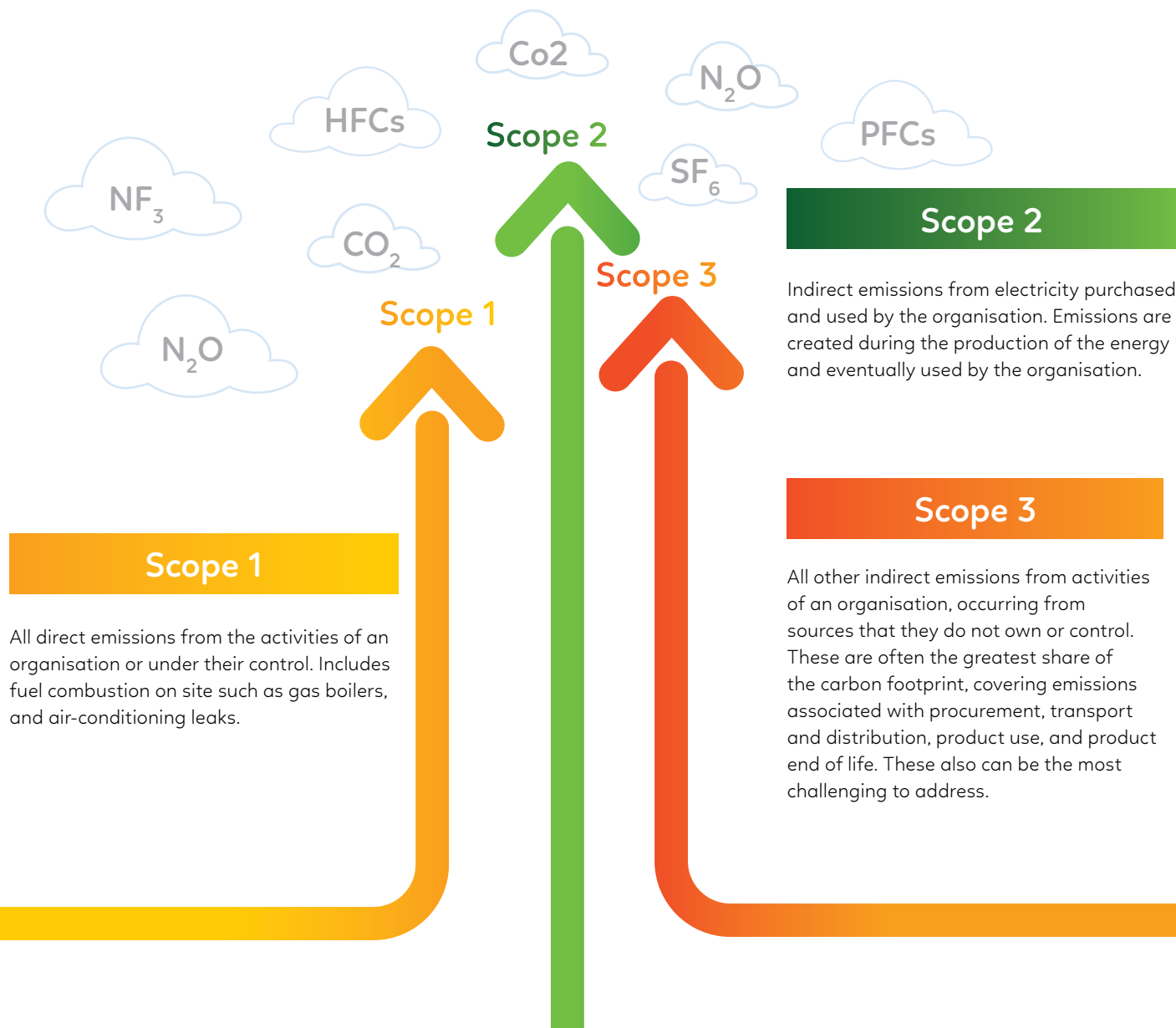


Environment

GHG Emissions

PIL keeps track of Scope 1 and Scope 2 emissions across its operations and Emissions at PIL is a function of volume of gas transported and the operating philosophy (inlet pressure, exit point pressure requirements, etc.).

As a result, with changes in our volume profile, our GHG emissions footprint also changes. Scope 1 emissions contribute to 97% of our total GHG emissions while Scope 2 emissions contribute to residual 3%. Out of Scope 1 emissions, ~90% contribution is on account of our Gas Turbine Compressors (GTCs) and Gas Engine Generators (GEGs) which are crucial for ensuring uninterrupted business operations. However, being cognizant of our environmental stewardship, we always strive to conduct our business operations in an environmentally responsible manner to the extent possible. At PIL, we continuously monitor GHG emissions across our operations and identify ways to optimise them in whatever way possible from business continuity perspective.



Climate & Water Management

Climate Change

We strive to improve our environmental performance continuously by enhancing our current practices to reduce GHG emissions by undertaking several initiatives, two of which are as under:

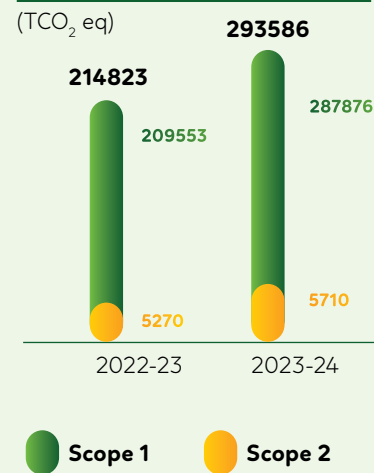
1) Optimisation of fuel consumption using Pipeline Application Software [PAS]

PAS is a simulation package to better monitor and control the pipeline system. We have made efforts to optimise fuel consumption (SUG) for GTC operation by using Pipeline Application Software (PAS). This system provides a variety of functionalities and incorporates a gas pipeline hydraulic simulation engine which assists the operation centre.

2) Helicopters replaced by drones for aerial monitoring

At PIL, we are performing regular inspections through drones to ensure safety and security. Combined with advanced software, drones can deliver superior analysis and insights based on high resolution images, videos and associated geospatial data on pipelines.

Total Emissions



Renewable energy

The use of renewable energy reduces operational costs and ensures clean energy for a green future. We embraced renewable energy by utilising solar power at its sites.

1) Solar panel installation at Compressor Station-07

A plot of 2,413 sq m within CS-07 has been identified for solar facilities. We have installed a 300 KWp on-grid Solar Power Plant at this location, with an estimated annual energy generation of 490,000 kWh.

Water Conservation

PIL is cognizant of potential impact on water resources because of its operations. These primarily include water pollution and depletion and land contamination. To ensure all this, PIL utilises bore well water for horticulture.

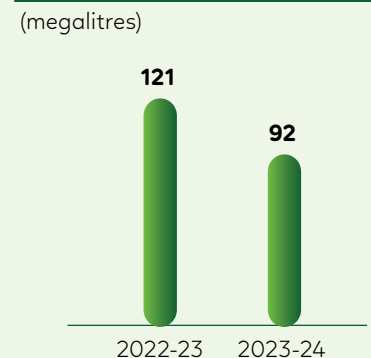
1) Drip Irrigation System for Green Belt Development

This is one of the initiatives undertaken to minimise water usage and save natural resources. A drip irrigation system has been implemented for green belt development at compressor stations. Due to the installation of the drip irrigation system, maximum utilisation of available water for greenbelt development has been possible.

2) Minimising contamination of soil and groundwater

We have installed sluice gates at the inlet of the rainwater collection pond to safeguard nearby streams, rivers, and other water bodies from contamination by oil and chemicals during major firefighting operations.

Total Water Consumption



Environment

Case study

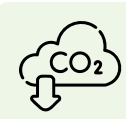
Fugitive emissions detection using Optical Gas Imaging (OGI) technology

Problem Statement

Conventional gas detectors used in PIL—such as Point Infrared (IR), Ultrasonic Gas Detectors (UGD), and Open Path Infrared (OPIR)—require a minimum threshold gas concentration for detection and can be influenced by environmental factors such as wind direction and velocity, etc. Also the detectors are used for in situ applications as they are intended to cover the critical equipments. Detecting fugitive emissions at a preliminary stage was a challenge.



Benefits

 Fugitive emissions arrested to the tune of 0.18 MMSCM/Yr or 3246 tCO2eq/Yr

Action Taken

Fugitive emissions survey was carried out for PIL facilities and emissions sources were identified, tagged and LEL/PPM readings before and after attending the leaks were recorded. Sources identified by the camera but undetected by LEL readings or snoop solutions were kept under observation.



Case study

Godavari Bank Protection Works

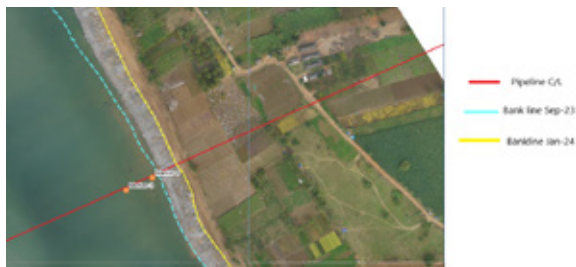
Background

The PIL 48-inch pipeline crosses the Gowthami-Godavari River in Andhra Pradesh with a 2.4 km crossing length. Heavy rainfall in 2022 and 2023 caused significant soil erosion on the east bank, severely impacting the environment.



Before Floods

After Floods



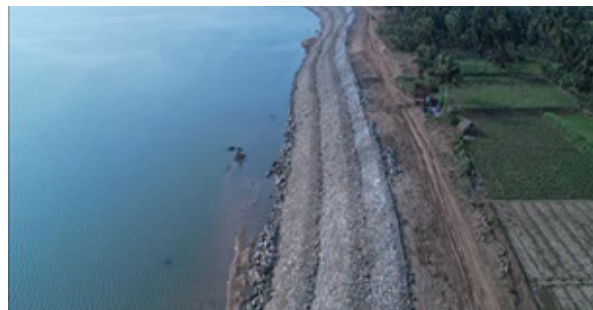
After Bank Protection

Problem Statement

The landfall point of the pipeline has shifted from 250m to 90m from the riverbank due to erosion, risking pipeline exposure. The erosion has led to environmental degradation, including loss of vegetation.

Action Taken

To mitigate the risk of further soil erosion and prevent additional environmental damage, bank protection through stone pitching was undertaken for 1.60 km, reinforcing the east bank and safeguarding the pipeline's integrity.



After completion of 1.60 kilometres bank protection works

Impact

The bank protection measures not only addressed the immediate risk to the pipeline but also delivered broader benefits aligned with ESG principles. Environmentally, the project had a positive impact by contributing to soil stabilisation and encouraging vegetation restoration. Socially, it played a crucial role in protecting local communities and mitigating disaster risks. From a governance standpoint, the project demonstrated proactive risk management and a strong commitment to public safety, ultimately strengthening the overall ESG profile of the initiative.



Environment

Case study

Pipeline Aerial Surveillance Through Drones

Background

The area around PIL's pipeline network has seen increased development, resulting in more population and construction activities. This has raised the risk of third-party incidents, necessitating regular surveillance for preventive measures. RoU maintenance and monitoring are crucial for pipeline integrity. PIL actively conducts

RoU surveillance using line walking, road patrolling, and aerial patrolling. Each method, despite differing frequencies, is vital for preventing damage to assets. To enhance surveillance, PIL now uses advanced drone technology for RoU monitoring.



Impact and Benefits

- (a) Drone surveillance has lowered greenhouse gas emissions by approximately 1.84 MT per month, representing a 48% reduction compared to previous practice of helicopter based surveillance. In the fiscal year 2023-24, 9 Drone missions were carried out thereby decreasing emissions by 16.56 MT/year.
- (b) The reports now feature digitised aerial images with GPS coordinates, which clearly show third-party activities and encroachments within the Right of Use (ROU).
- (c) Using drones saves around 9 man-hours and optimises vehicle usage by about 200 kilometres per CS/month, further reducing emissions.
- (d) Additionally, this approach carries lower health, safety, environmental and financial risks than helicopter patrolling.

16.56 MT/year

Reduction in emissions owing to the drone mission

Case study

Replacement of conventional lighting systems with LED-based lighting

Energy conservation plays a critical role in determining the operational efficiency of a company. The Company acknowledges the significance of energy conservation in mitigating the adverse impacts of global warming. PIL consistently strives to conduct its operations in an environmentally friendly manner and actively seeks methods and strategies to reduce energy consumption within its processes.

PIL continued its initiative to convert conventional lighting systems to LED-based lighting, which is both energy-efficient and environmentally friendly. During the fiscal year 2022-23, PIL invested approximately ₹ 11 Lakhs in this conversion process. This effort resulted in an annual reduction of electricity consumption by around 0.267 million units, translating to a savings of ₹ 26.7 Lakhs per annum in related energy costs.



In the fiscal year 2023-24, PIL advanced its initiative to convert conventional lighting systems at Compressor stations, Main line valves, and Metering and regulating stations. This effort resulted in an average conversion rate exceeding 95%, achieved through an investment of ₹ 128 Lakhs and resulting in electricity savings of approximately 626 KW across all sites.



Social

For the Greater Good

At PIL, we are committed to conducting business in a socially responsible manner by prioritising the well-being and safety of our employees, promoting diversity and inclusion, and engaging in initiatives that benefit our stakeholders and communities.



Human Capital

Human Capital is vital to an organisation's success, and at PIL, our employees are our greatest asset. We prioritise ESG practices by investing in our people and fostering a culture that supports their growth and development.



Our Commitment

Diversity & Inclusion



Female Representation in PIL workforce ~20% by 2030

Increase representation of other genders by 2030

Increase representation of returning mothers and mothers with year gaps by 2025

Employee Satisfaction



y-o-y improvement in employee satisfaction score

Mental Health



Employee Wellness policy/ Framework by 2025

Awards & Recognitions

Our efforts to foster a healthy work culture have earned us Great Place to Work certification for three years in a row.



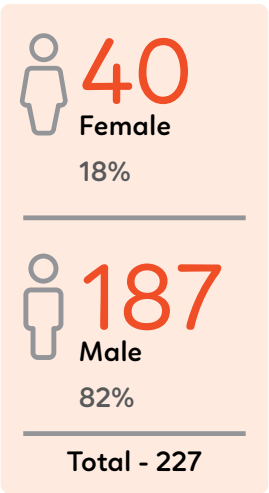
Social

Diversity & Inclusion

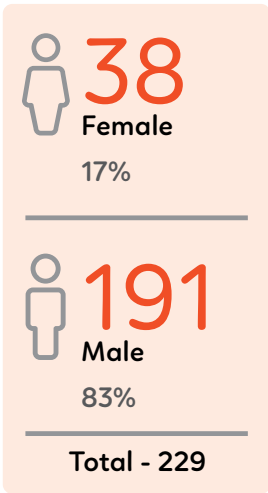
At PIL, we value Diversity and Inclusion (D&I) as essential to our culture. We believe a diverse and inclusive environment strengthens our business, drives innovation, and helps us better serve stakeholders. Starting in 2019 with two female employees, we now have about 40 women across various roles. We added 40% females among our new hires.

PIL Employee Diversity

By Gender in
FY 2022-23



By Gender in
FY 2023-24



Case study

New Porta Cabins for Contractor Workforce



Contractor workforce forms a significant part of our site manpower, and we prioritise their well-being by ensuring a conducive work environment. To upgrade deteriorated facilities, we replaced old Porta Cabins at Compressor Stations with best-in-class Galvanised Iron units. These new cabins offer air-conditioned canteens, rest areas, offices, and toilets, enhancing contractor comfort. Fast to construct, weather-resistant, and well-insulated, they provide durable, low-maintenance accommodation and office spaces, meeting onsite requirements effectively.



At PIL we are committed to a positive, open and inclusive work environment free from discrimination, violence and harassment. Each of us has a personal responsibility towards colleagues and PIL to play an active role in achieving a safe and respectful work environment.

Know more: [Positive Work Environment Policy](#)

Human Rights

Pipeline Infrastructure Limited has identified no operational sites or suppliers to have significant risk for Human Rights violations, including forced or compulsory labour or violating the right to exercise freedom of association or collective bargaining.

PIL enforces the Anti-Slavery and Human Trafficking Policy to ensure:

- Elimination of discrimination in employment
- Prohibition of modern slavery, including child and forced labour
- Eradication of harassment and physical or mental abuse in the workplace

The Company does not engage Third Parties who subject their professionals to child labour and encourage and practice exploitation of minors and violation of human rights in general.



Powering Progress with Integrity and Respect.

Know more:

[Anti-Slavery and Human Trafficking Policy](#)

Shared Prosperity

PIL believes that an organisation's choices should not be based only on its financials, but also on social and environmental aspects. Therefore, we acknowledge that it is our key corporate duty to match our actions with our corporate values, balancing social development with the needs of our stakeholders.

With the strong dedication to creating a positive change in society, PIL aim to incorporate sustainability practices into all parts of our operations, supporting a more fair and thriving future for society.

Our Commitment



Increase CSR initiatives to 50% of the Sustainable Development Goals (SDGs) by 2027



Increase employee volunteering in CSR activities

We actively engage with local communities, addressing their concerns in a manner that is both respectful and transparent.

Central to our strategy for promoting community well-being and achieving our CSR objectives is the meticulous identification of those individuals most likely to be affected by our operations.



Our CSR Policy guides its goals, projects, and monitoring.

Know more:
[CSR Policy](#)

Our CSR goals include the following:

Providing sustainable benefits to our stakeholders

Minimising our impact on the environment

Providing support for the well-being and development of the community

Continuing positive impact on our community and reducing negative impact, if any



Social

The Company continues to focus on the following three key areas:

Sustainable Livelihood

- Basic Infrastructure Development
- Employment enhancement Securing livelihood
- Protecting Childhood
- Environmental protection and conservation

Health and Sanitation

- Health awareness and sanitation drives
- Medical camps
- Any other disaster response/ relief measures (e.g. Covid outbreak, floods)
- Development of Health Care facilities

Education

- School Infrastructure Development
- Training Students on health and hygiene
- Introducing different methods of education
- Efforts towards continuity of education for underprivileged children

The identified CSR projects are governed and executed by:

CSR Committee

The committee approves projects identified

CSR Implementation Group

PIL's CSR goals are supported by a dedicated cross- functional working group, i.e. CSR Implementation Group, formed under the CSR Policy, to ensure the engagement of different parts of the business who can drive the same forward

Employees / Volunteers

Besides collaborating with the implementing agencies / non-governmental organisations for its CSR projects, the Company also undertakes various projects internally, managed entirely by volunteer groups / employees

Case study

Improving Education Infrastructure

PIL has taken on a remarkable project to facelift a Primary School in Osmanabad, Maharashtra region near CS-06 area, bringing positive change to the lives of 130+ students and 8 teachers.

This admirable initiative has seen the complete makeover of the school infrastructure, creating a new atmosphere

for learning. The project included repair of the existing school building, rebuilding of clean cooking and dining areas ensures healthy eating & providing durable desks and benches that improves the comfort and convenience of students, creating an encouraging educational environment.



Case study

Development of Community Health



In collaboration with GSL, PIL conducted two successful medical camps to provide essential healthcare services. The first camp on 27th February 2023 in Atreyapuram Village, Andhra Pradesh, served 481 beneficiaries. The second camp on 17th & 18th March in Namavaram Village, Telangana, benefited 842 villagers. Both remote areas received comprehensive health check-ups, including oral cancer screening, PAP tests,



ECG, routine blood tests, ENT, eye exams, and gynaecological services. Free spectacles and medicines were provided, and those with critical conditions were referred to hospitals for further care. Seven volunteers from Region & HO supported these initiatives, highlighting our commitment to corporate social responsibility by improving community welfare and making a positive impact.

Case study

Food Grain Distribution



“Baduguvani Lanka” is a remote village located in East Godavari district in Andhra Pradesh that experienced severe floods, impacting the entire community. As part of our CSR initiatives, we provided food grains to 1250 villagers. This effort supplied essential food supplies during the flood crisis, addressing hunger and offering a sense of security. It aimed to

meet the immediate need for survival during a crisis by ensuring access to nutritious food. Additionally, this initiative allowed individuals and families facing food insecurity to focus on restoring their livelihoods and communities.

Social

Safe Operations

Safety is core to our business operations. We ensure that we embed safety in all forms and at all times to create safe workplaces across all our operations.

Employee & Contractor Safety

PIL is dedicated to ensuring a safe and healthy environment for all its employees, including contractor workforce, and the community at large. By rigorously pursuing GOAL ZERO, we are determined to secure the safety of our workforce. At PIL, we firmly believe that everyone is a safety leader and ‘Leading by example’ is the way to demonstrate safety in our day-to-day work. The culture of safety is embedded in all our operations and business decisions.



Principles of Health & Safety



Active involvement of Leadership & Employees



Well established systems



Effective communication



Periodic review and monitoring



Personal well-being measures



Capacity Building through training



Robust Deployment of HSSE policy

Awards & Recognitions

“Sword of Honour 2022” by the British Safety Council to acknowledge our commitment to excellent health, safety, and well-being management.



Industry’s Best Performer in the “Health & Safety” category at ET Energyworld Annual Gas Awards 2022.



Our Commitment



Reducing total recordable incident rate Y-o-Y



10% reduction in safety critical equipment outage by 2025



Improve contactor incident reporting by more than 50% annually



HSSE trainings for 100% of the contractors by 2024



5% reduction in unplanned gas release through ESD/ Electronic Brake force Distribution (EBD) Million Metric Standard Cubic Meters per Day (MMSCMD) by 2025

Our Governing Principles

We are committed to the governing principles of:

- Every HSSE incident, both occupational injury and illness, is preventable.
- Adoption of policies, procedures, performance, and practices is every employee's (employee and contractor work together as "Employees") responsibility.
- Site-level Committee (monthly)
- Head office level committee (Quarterly/ Yearly)



HSSE Management System Highlights

Policies and procedures (like Work at Height, PTW, Lock Out Tag Out (LOTO), Toolbox talks, Management of Change (MOC)

HSSE committee meetings and performance reviews held at regular intervals

Third-party and internal reviews and audits

HSSE awareness and mandatory training programmes

Incident management and reporting

Hazard Identification & Task-based Risk Assessment



Safeguarding Lives and the Environment.

Know more:
HSSE Policy

Social

HSSE Principles and Guidelines



Implementation of “Zero Tolerance Rule” (No Smoking, No Drugs/ Alcohol & No Ignition Sources at the Workplace)



Compliance with Life Saving Rules (LSR) for high-risk works where failure to comply has the highest potential for severe injury or death



PIL follows the “GOAL ZERO” policy - NO HARM, INJURY, and NO LEAKS



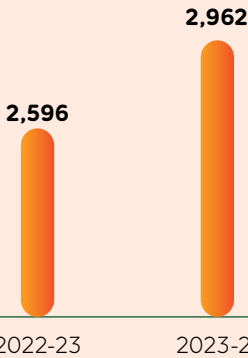
As HSSE Ambassadors, all Employees are empowered to STOP any unsafe work

HSSE Performance

Our consistent HSSE performance in the top quartile exemplifies our continued commitment to safe operations.

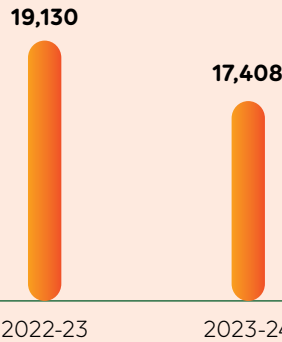
Days without Lost time injury

(Days)



HSSE training imparted

(Person-hours)



Capability Building

PIL ensures comprehensive capability building by offering scientifically selected training modules. All employees and contractors must complete mandatory health and safety training hours before working on PIL premises. PIL employees can access web-based training modules. Contractors receive classroom training. We include interactive communication, including safety quizzes, and films, alongside participation from employees and contractors during events like Road Safety Week and National Safety Week, strengthening our HSSE culture.

Lost time Injury Frequency Rate (LTIFR) during last 5 years

Zero

Case study

Leveraging Technology for Safe Operations

Electronic Permit to Work (e-PTW) System

PIL has deployed an e-PTW system application for securing permits electronically before performing activities safely and securely after assessing the site conditions. Android- based tablets are provided to all compressor stations to use the e-PTW application and obtain permits for activities across remote locations in PIL facilities.

Benefits realised



Smooth flow of work



Time savings



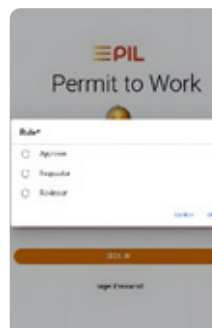
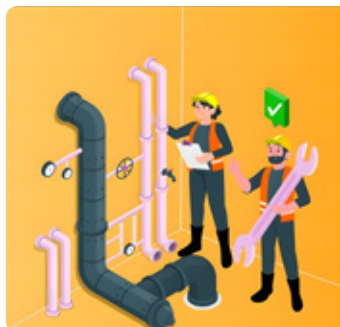
Avoid lengthy paperwork c.50,000 documents each year



Real-time permit tracking



Better audit trail and on-the-spot audit



In-Vehicle Monitoring System (IVMS)

Road accident is a critical operational risk for PIL due to our operational footprint across which men and material movement occur. IVMS devices were installed in all vehicles used in PIL facilities to improve driver behaviour and performance.

In-Vehicle Monitoring Systems is a system whereby vehicle usage and driver behaviours can be monitored from a central place of management. Individual driver trip scores are calculated based on the total number of extreme events (Harsh Acceleration, Harsh Brake and Overspeed etc.)

Benefits realised



Safe Driving Score improved to

99.6 % from
98.4%



Governance

Do the Right Thing the Right Way

Effective corporate governance fosters an environment that supports sustainable long-term growth. PIL has implemented numerous governance frameworks and policies aimed at maintaining high ethical standards and ensuring transparency for our diverse stakeholders. These initiatives are reinforced by the Board of Directors, which offers strategic and independent oversight of the Company's activities.



Corporate Governance

PIL's Board of Directors provides strategic direction and oversight in the conduct of the business and affairs of the Company in alignment with Governance principles and policies. These are consistent with PIL's values and highest standards of corporate governance, thereby protecting the interests of its key stakeholders.

Board Diversity

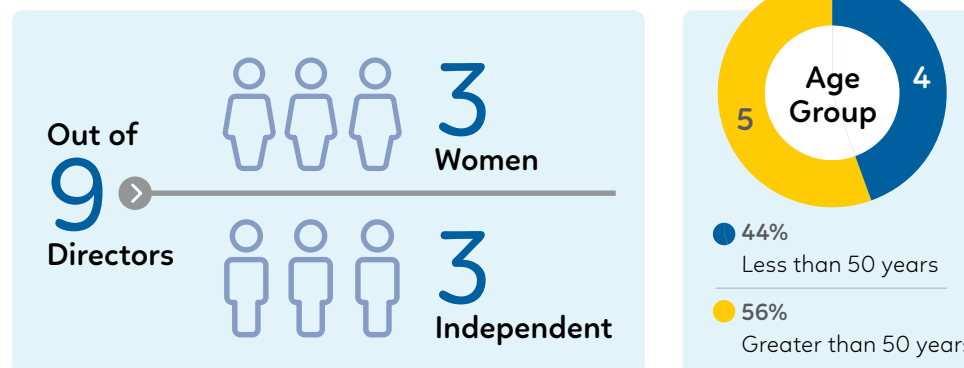
The Company recognises the benefits of having a strong, independent, and diverse Board composition to ensure robust and effective corporate governance deployment across PIL. Accordingly, in determining the Board's composition, diversity is considered from several aspects, including gender, age, cultural and educational background, ethnicity, professional experience, skills and knowledge, and tenure.

Our Directors bring experience across Finance, Accounting, Marketing, Human Resources, Business Development, Governance and Strategy.

Board Remuneration

Remuneration paid to Directors is as per the PIL Nomination and Remuneration Policy and is within limits provided under the Act and the SEBI Listing Regulations. No remuneration is being paid to Non-executive Directors except sitting fees to Independent Directors in terms of the provisions of the Act.

Board Composition for FY 2022-23 and 2023-24



Committees of the Board

PIL's governance structure consists of the following committees by the provisions of the Companies Act and the SEBI Listing Regulations -

- Audit Committee
- Risk Management Committee
- Nomination and Remuneration Committee
- Corporate Social Responsibility Committee
- Stakeholders Relationship Committee

Such Board Committees engage throughout the year to drive industry-leading governance practices. Each committee has well-defined powers, roles and responsibilities to enable smooth functioning and resolution of concerns. The constitution of each of the committees also requires a minimum number of Independent Directors to ensure independent oversight in their corresponding proceedings. In addition, the Risk Management Committee of the Board oversees the ESG strategy and its implementation through periodic reviews of ESG initiatives undertaken by the Company.

Our Annual Report for FY 2022-23 and FY 2023-24 contains detailed information on the composition, terms of reference, meetings and attendance of Committee members. The same can be accessed on our website - pipelineinfra.com/investor-relations

Governance

Ethics and Integrity

Ethics and integrity are fundamental to our governance, earning the trust of stakeholders. At PIL, we value integrity, trust, and respect, promoting transparency and ethical behaviour in all aspects of our business.

PIL Ethical Framework

PIL's Ethical Framework is supported by Governance Policies applicable to all operations, including third parties. Key policies include Code of Business Conduct and Ethics, Anti Bribery & Corruption (ABC) Policy, and Whistle-Blower Policy, approved periodically by the Board. Additional procedures provide detailed principles and guidelines from these core policies.

Code of Conduct & ABC

Board members acknowledge the Code of Conduct annually. All employees undergo mandatory training on the ABC Policy and Code of Conduct, including new hires during onboarding. They confirm their understanding and adherence to these policies each year. Vendors are informed about PIL's ABC requirements through a third-party ABC Code and the Supplier Code. They must also submit representations on ABC compliance and breaches as part of contract terms.

0
Total number of confirmed incidents of corruption or any cases filed against us in FY 2022-23

ABC Programme

PIL has deployed a robust ABC programme. It requires a risk assessment of its business operations to identify potential sources of ABC risks and define / develop mitigation plans to minimise such risks. As a result, 100% of our operations are assessed for corruption-related risks

100%
Total number of employees that have undergone the ABC training and Code of Business Conduct & Ethics is

Our Commitment




Get Anti-Bribery & Corruption system ISO 37001:2016 certified by 2025

Complaints can be filed for various value transgressions, including	
Fraud, Theft or Misuse	Positive Work Environment
Bribery and Corruption	Health, Safety and Environment
Code of Conduct	Others

Grievance Redressal Mechanism

Our robust Grievance Redressal Mechanism and Governance Framework ensure strict adherence to laws and our Code. The Code and Whistle Blower Policy enable reporting of violations via an independent channel, including a 24x7 multilingual Ethics Hotline in six languages (Hindi, English, Telugu, Kannada, Gujarati, Marathi). Confidentiality is respected, and retaliation is prohibited. Violations can also be reported to supervisors, the Chief Risk Officer, or the Audit Committee. The Hotline number and website are publicised during awareness sessions, on the company website, and in vendor contracts to promote a "Speak Up" culture. No employee was denied access to the Audit Committee for grievance reporting during the reviewed year.

Total 1 case reported in 2022-23

 The core Governance policies can be accessed from our website.
Know more:

- [Code of Business Conduct and Ethics](#)
- [Anti Bribery & Corruption \(ABC\) Policy](#)

At PIL, we encourage our employees and stakeholders to Speak Up and report misconduct without fear of retaliation
Know more:

- [Whistle-blower policy](#)

Risk and Resilience

Risk affects every part of PIL's business. To achieve our goals sustainably, we must identify and manage risks systematically and develop resilience to handle internal and external shocks, both known and unexpected.

Enterprise Risk Management (ERM)

Our Integrated Enterprise Risk Management (ERM) framework covers strategic, operational, legal, and compliance risks. The Board-approved Risk Management Policy ensures systematic identification, management, and reporting of risks. It supports risk-informed decisions and efficient resource allocation.

Each quarter, the Board's Risk Management Committee reviews top business risks, including HSSE and operational risks, and evaluates mitigation strategies. An Independent Board member chairs this committee.

Audit Oversight

PIL's audit committee monitors financial reporting systems, internal controls, and auditor performance. It approves the annual audit plan and reviews significant findings from audits.

The Board oversees the internal control system to ensure accurate accounting records and timely financial information. Internal teams or third parties conduct reviews and stress tests to verify control effectiveness.

Our key business management controls include the risk policy and committee.



Know more:

- [Risk Management Policy](#)
- [Charter for the Risk Management Committee](#)

Key Risk Management Activities

Review of Top 10 risks of PIL along with mitigation strategies and trends

Bottom-up review of functional and enterprise-wide risks

Assesses the potential impact of each risk and mitigation plans

Consider external environment and dependencies for emerging risks

Risk reward trade-off on crucial business decisions



Governance

Compliance

Compliance with applicable laws and regulations is critical to sustainable operations and stakeholder trust and confidence. Therefore, PIL has established a robust Compliance tool/ repository to proactively monitor 200+ statutes and rules that apply to our operations across 17 installations and five entities and translate them into 4000 + compliance actions.

 **200+**
Statutes and rules

 **17**
Installations

 **5**
Entities

 **4000+**
Compliance actions

The compliance tool/ database helps manage and monitor compliance efforts across the organisation so as to:



Embed compliance roles and responsibilities



Generation of compliance certificates and reports



Create workflows and alerts



Introduce new Legislation or changes in existing Legislation are considered timely

PIL has also established a Compliance Committee to periodically review Compliance updates that are also reported to the Board each quarter.



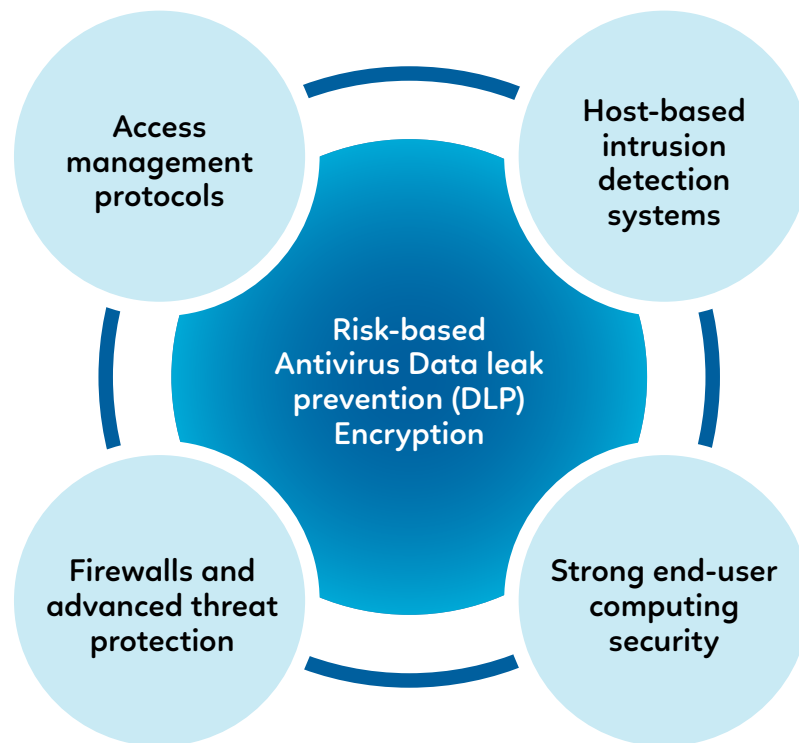
Cyber Security


Cyber Security remains a key area of governance to detect, prevent, and remediate any cyber-attacks on our IT/OT infrastructure that could lead to operational disruptions, system unavailability, and data breaches. In terms of overall governance, we have established Information Security policies and procedures, launched awareness campaigns, mandated training, and implemented development protocols. Our processes are aligned with ISO 27001 security standards and OT standard IEC 62443. Additionally, we periodically review our Cyber Security programme through

independent third parties and internal teams, including vulnerability assessments and penetration testing.

We continuously enhance our response capabilities through surveillance and proactive incident reporting. For resilience, we have established an IT Disaster Recovery site in Hyderabad, while Operation Technology Disaster Recovery (OTDR) is managed through an alternate Pipeline Operations Control (POC). Fire drills are conducted to restore business-critical systems from backup, and simulations of phishing attacks are performed periodically for PIL users to assess training effectiveness

Cyber Security prevention & detection measure implemented



 PIL understands and recognises the importance of 'information' to its business operations and is committed to establish measures for safeguarding the information and data from unauthorised and illegitimate access.

Know more:

[Information Security Policy](#)



Our Commitment

Advance effective cyber defence programmes to protect information and services

Case study

Strengthening of Cyber Security Systems

Cyberthreats are at an all-time high. In order to safeguard our assets and data from such threats, we realise that antiquated technologies like antivirus and firewalls are weak defenses against modern, sophisticated cyberattacks. Businesses must modernise their cybersecurity by using the new technologies. In PIL we have deployed CrowdStrike EDR.

It's an integrated endpoint security measure that combines real-time continuous monitoring and collection of endpoint data with rules-based automated response and analysis capabilities.

It uses machine learning, behavioral analytics, and real-time threat intelligence. CrowdStrike eliminates the need for on-premises infrastructure.



It offers comprehensive protection against various cyber threats, minimal system impact, advanced response capabilities, and proactive threat hunting services.

Connecting pipelines of prosperity

Safer and sustainable



Pipeline Infrastructure Limited

CIN: U60300MH2018PLC308292

Registered Office

Seawoods Grand Central,
Tower-1, 3rd Level, C Wing - 301 to 304, Sector 40,
Seawoods Railway Station, Navi Mumbai, Thane,
Maharashtra - 400 706, India

Tel No.: +91 22 3501 8000

Email: compliance@pipelineinfra.com

Website: www.pipelineinfra.com